

P4 Indoor 320x160mm Magnetic LED Module

Specification

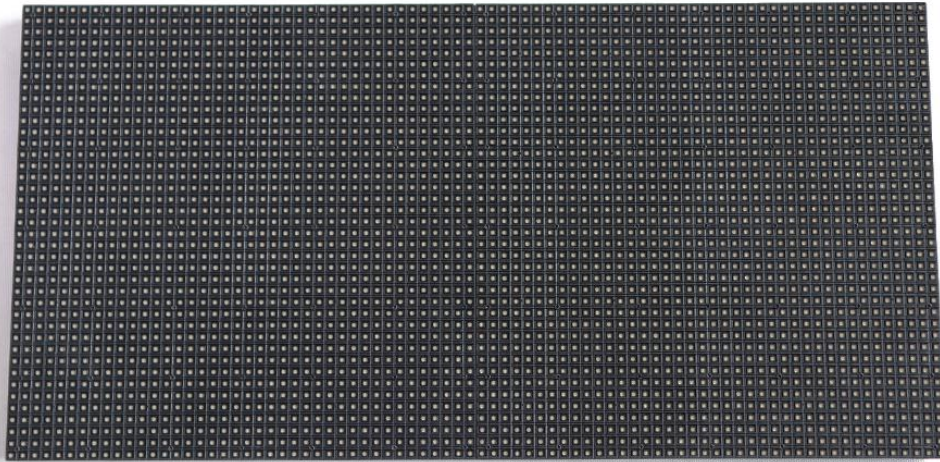
Model No.: **P4-I20S-SMD2121-80x40**

LED Lamp Specification



Color	Package	Intensity	Viewing Angle	Wavelength	Testing Conditions
Red	SMD2121	80-104mcd	120°	618-623nm	25°C, 15mA
Green		270-338mcd	120°	515-519nm	25°C, 10mA
Blue		31-39mcd	120°	465-469nm	25°C, 5mA

Module Photo







Module Parameter

Pixel Pitch	4mm
Pixel Configuration	SMD2121
Density	62,500 pixels/m ²
Module Resolution	80pixel(L) * 40pixel(H)
Module Dimension	320mm(L) * 160mm(H) * 18mm(D)
Driving Mode	Constant current, 1/20 duty

Electricity Parameter

Optical Ratings

Brightness	≥800 cd/m ²
Viewing Angle	120°(Horizontal); 120°(Vertical)
Best Viewing Distance	≥4m
Gray Grade	14 bits
Display Color	4.4 trillion colors
Brightness Adjustment	100 grades by software or automatically by sensor
Max. Power Consumption	18W

Control System

Frame Frequency	≥60Hz
Refresh Frequency	≥1920Hz
Input Signal	Composite Video, S-video, DVI, HDMI, SDI, HD-SDI
Control Distance	100m(Ethernet cable); 20KM(optical fiber cable)
Support VGA Mode	800*600, 1024*768, 1280*1024, 1600*1200
Color Temperature	5000—9300 adjustable

Brightness Correction	Pixel by pixel, module by module, cabinet by cabinet
Reliability	
Working Temperature	-20~+60 °C
Storage Temperature	-30~+70 °C
Working Humidity	10%~90% RH
Lifetime	100,000 hours
MTBF	5000 hours
Continuous Operating Time	≥72 hours
Protection Grade	IP31
Out-of-Control Pixel Rate	≤0.01%

Package





